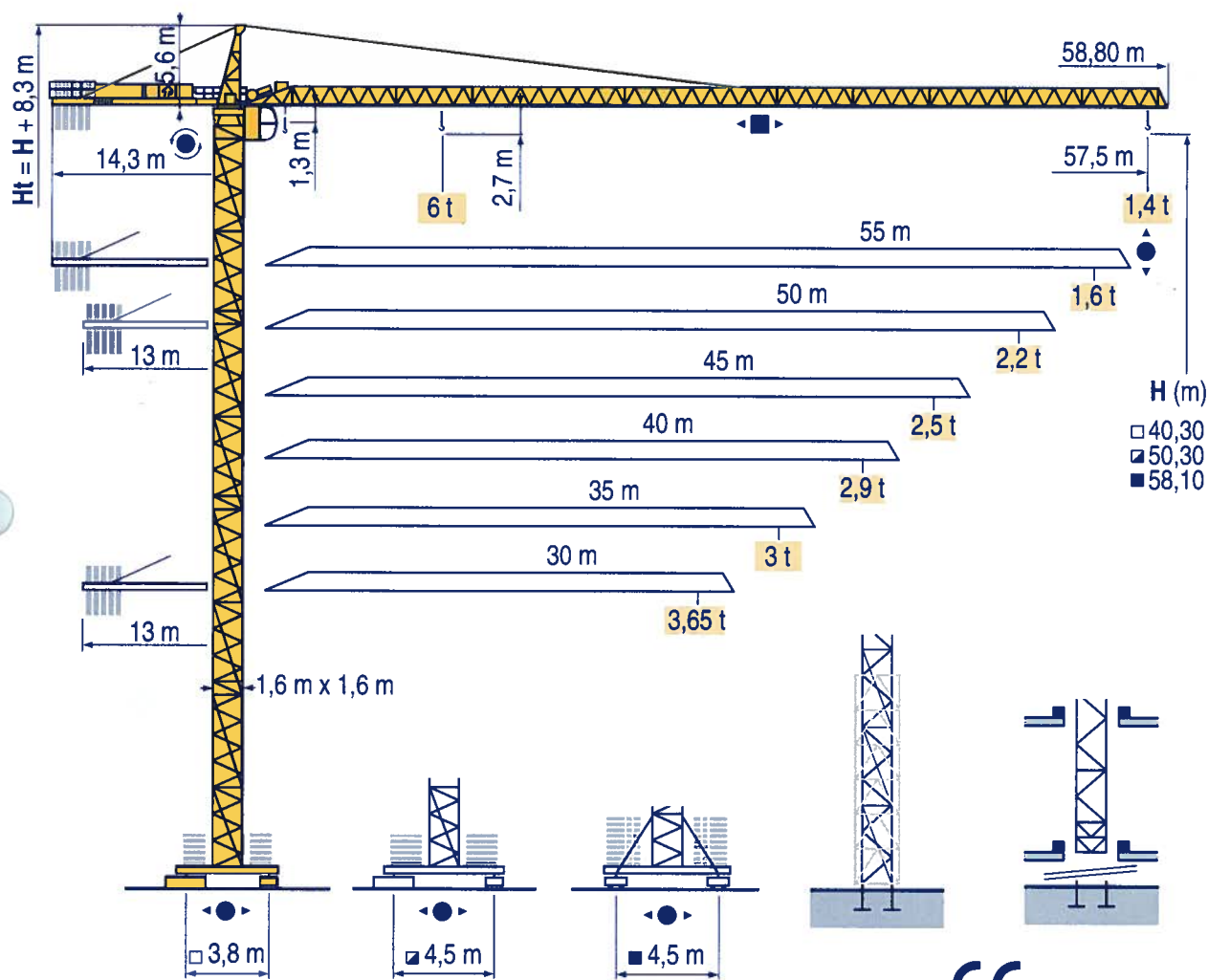


CITY CRANE MD 125 B



- HD HDM
- HDT
- GTMR
- CITY CRANE**
- TOPKIT MD MAXI MD
- MAXI TOPKIT
- Topless MDT
- MR

CE FEM 1.001-A3



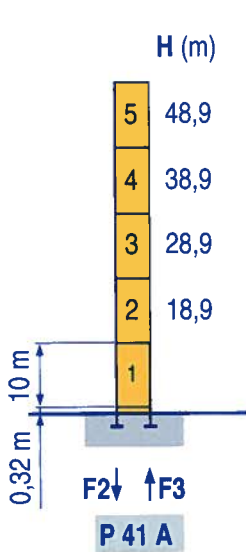
Mat / Réactions
Maste / Eckdrücke
City 1,6 m



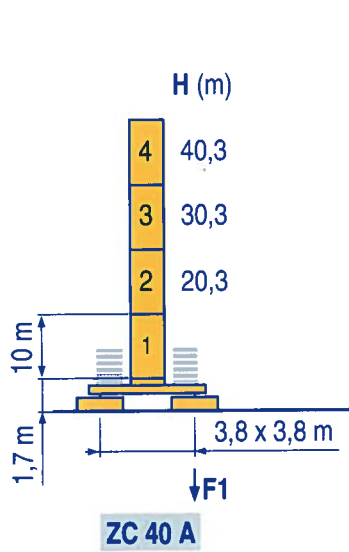
Masts / Reactions
Mástil / Reacciones
City 1,6 m



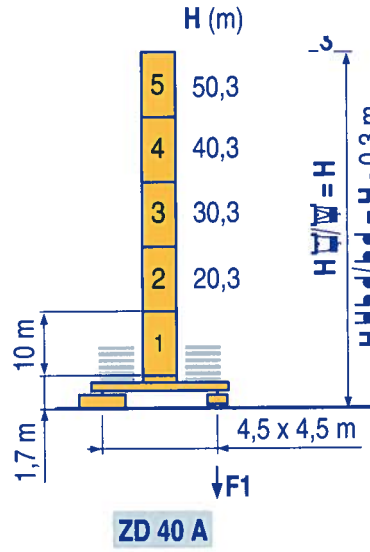
Torre / Reazioni
塔身 / 反力
City 1,6 m



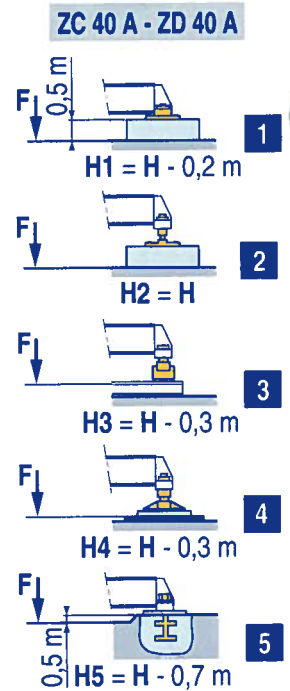
F2 ● 105 t ■ 147 t
F3 ● 71 t ■ 116 t
▲ 33 t



F1 ● 58 t ■ 63 t
▲ 35 t



F1 ● 65 t ■ 83 t
▲ 40 t



LSP 1

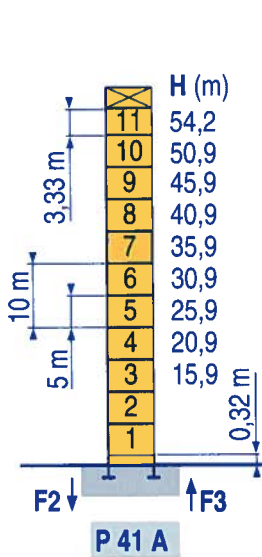
Télescopable 1,6 m
Teleskopierbar 1,6 m



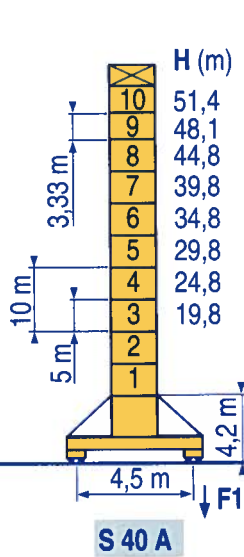
Telescopico 1,6 m
Telescopico 1,6 m



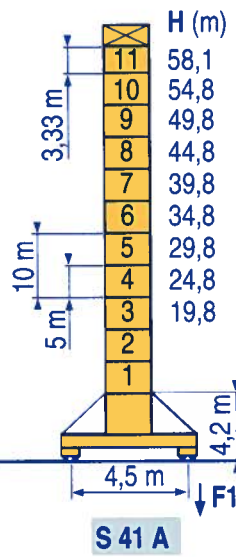
Telescopico 1,6 m
可顶升 1,6 m



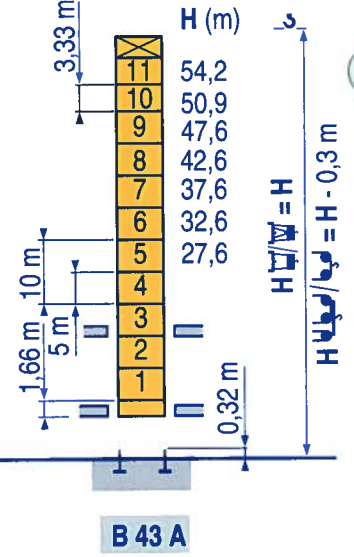
F2 ● 115 t ■ 173 t
F3 ● 81 t ■ 142 t
▲ 46 t



F1 ● 73 t ■ 96 t
▲ 50 t



F1 ● 86 t ■ 121 t
▲ 54 t



LSP 1

● Voir télescopage sur dalles
● Réactions en service
■ Réactions hors service
▲ A vide sans lest (ni train de transport) avec flèche et hauteur maximum.



See climbing crane
Reactions in service
Reactions out of service
Without load, ballast (or transport axles), with maximum jib and maximum height.



Consultare gru in cavedio
Reazioni in servizio
Reazioni fuori servizio
A vuoto, senza zavorra (ne assali di trasporto) con braccio massimo e altezza massima.

● Siehe kletterkrane im gebäude
● Reaktionskräfte in Betrieb
■ Reaktionskräfte außer Betrieb
▲ Ohne Last, Ballast (und Transportachse), mit Maximalausleger und Maximalhöhe.

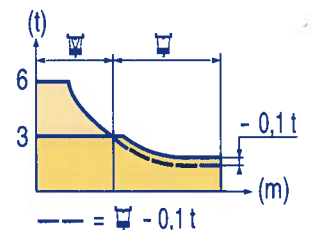
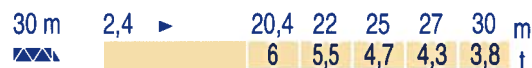
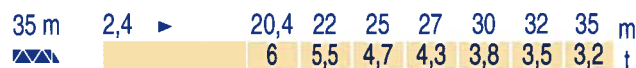
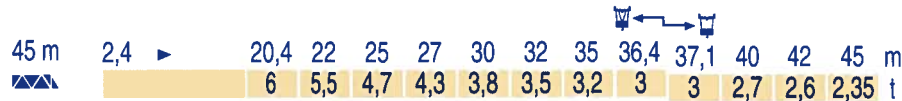
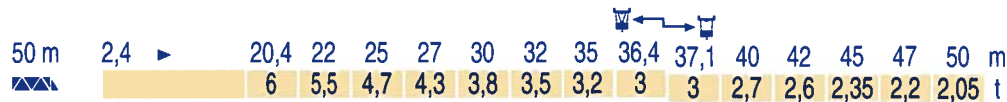
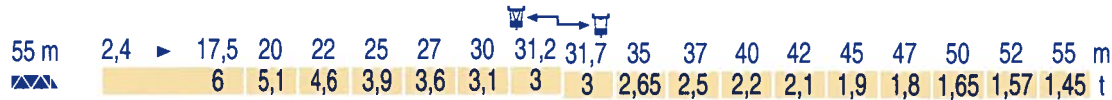
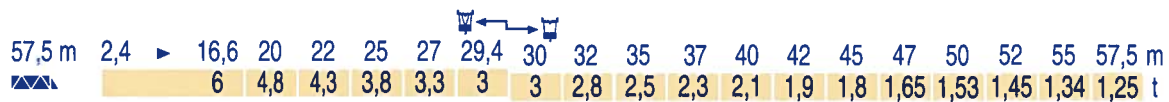
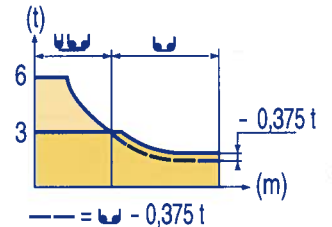
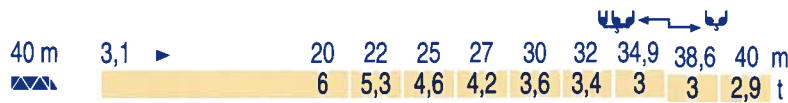
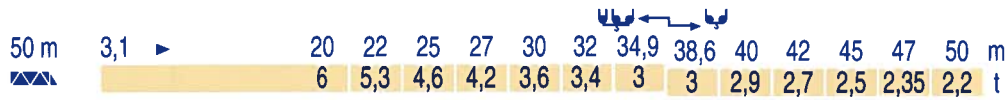
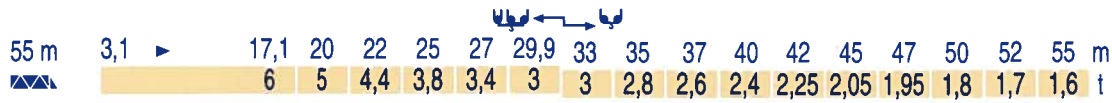
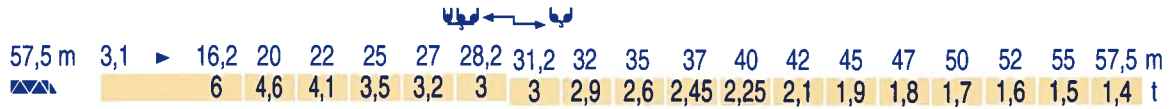


Vea grua trepadora
Reacciones en servicio
Reacciones fuera de servicio
Sin carga, sin lastre, (ni tren de transporte), flecha y altura máxima.



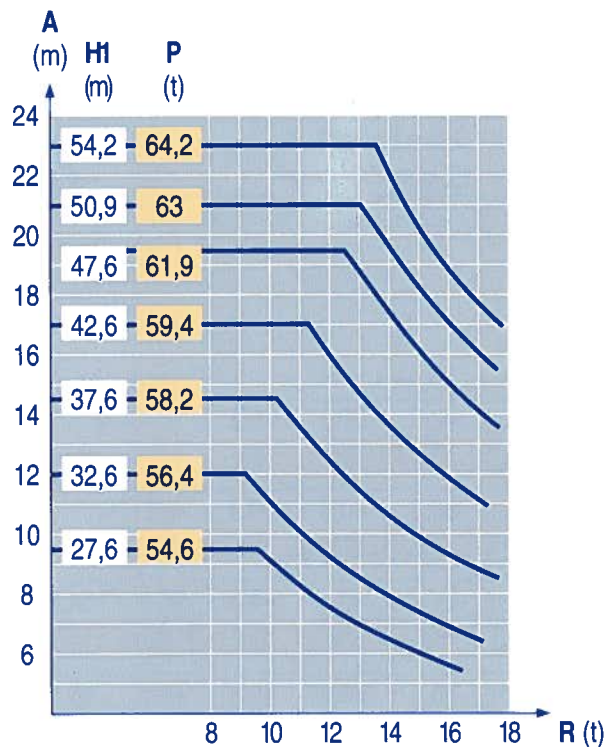
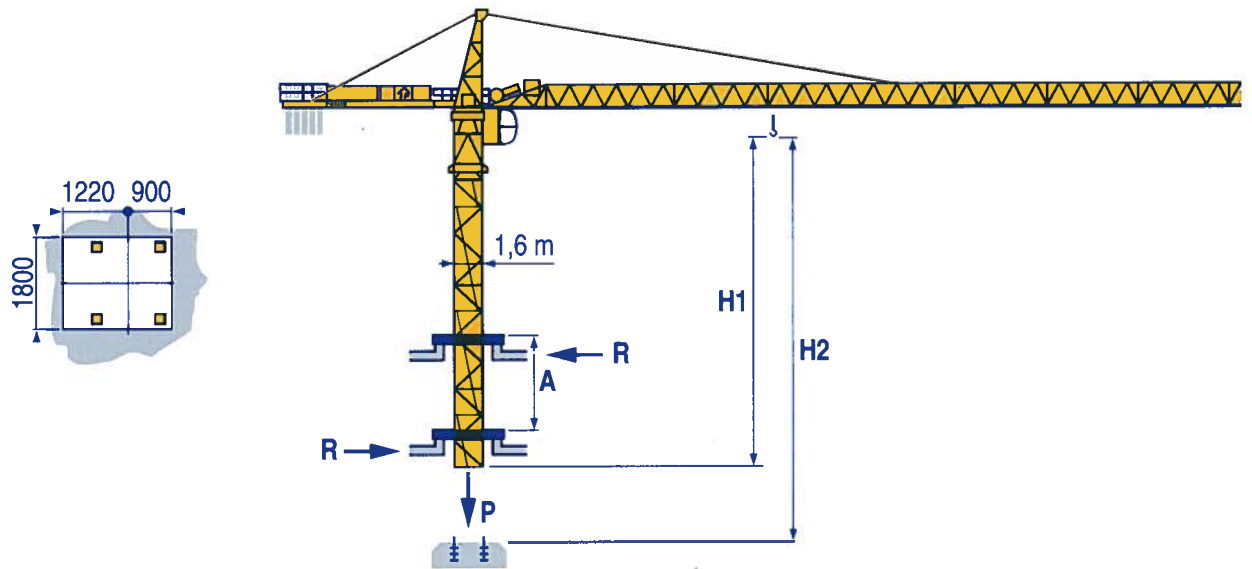
见楼板顶升
工作状况下的反应
非工作状况下的反应
空载无压重也无运输车
有吊臂和最大高度





LSP 1

B 43 A



LSP 1

A Distance entre cadres
H1 Hauteur grue
P Poids de la grue (en service)
R Réaction horizontale

F Distance between collars
Crane height
Crane weight (in service)
Horizontal reaction

GB Distanza fra i telai
Altezza gru
Peso della gru (in servizio)
Reazione orizzontale

A Abstand zwischen den Rahmen
H1 Kranhöhe
P Krangewicht (in Betrieb)
R Horizontalkräfte

D Distancia entra marcos
Altura grúa
Peso de la grúa (en servicio)
Reaccion horizontal

E 各附着框之间距离
工作状态下塔机高度
工作状态下塔机重量
水平反力

Lest de contre-flèche
Gegenauslegerballast



Counter-jib ballast
Lastre de contra flecha

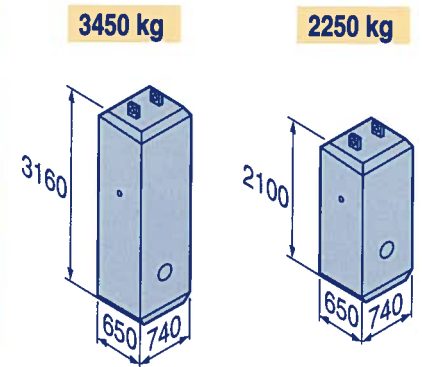


Contrappeso
平衡臂重



			3450 kg	2250 kg	(kg)
57,5 m		14,3 m	5	-	17 250
55 m		14,3 m	4	1	16 050
50 m		13 m	4	1	16 050
45 m		13 m	3	2	14 850
40 m		13 m	4	-	13 800
35 m		13 m	3	1	12 600
30 m		13 m	2	2	11 400

LSP 1



Lest de base
Grundballast



Base ballast
Lastre de base














Zavorra di base
压重



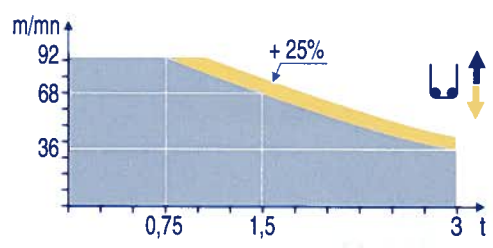
∅1,6 m	ZC 40 A - ● - >	H (m)	40,3	30,3	20,3						
		(t)	70	65	60						
∅1,6 m	ZD 40 A - ● - >	H (m)	50,3	40,3	30,3	20,3					
		(t)	70	55	45	45					
∅1,6 m	S 40 A - ● - >	H (m)	51,4	48,1	44,8	39,8	34,8	29,8	24,8	19,8	
		(t)	84	72	54	48	42	42	42	36	
∅1,6 m	S 41 A - ● - >	H (m)	58,1	54,8	49,8	44,8	39,8	34,8	29,8	24,8	19,8
		(t)	114	102	78	54	48	42	42	42	36

LSP 2

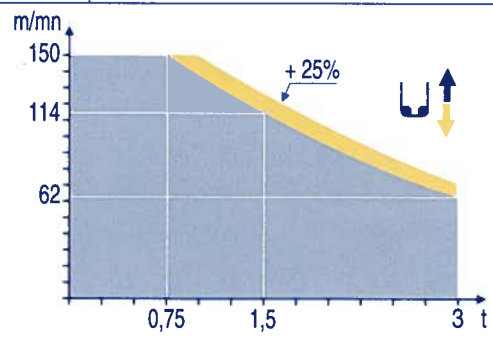
		L ↑			U ↑			ch - PS hp	kW				
	25 PC 15	m/min	6	30	60	3	15	30	25	18,4	260 m		
		t	3	3	1,5	6	6	3					
	33 PC 15	m/min	6	37,5	75	3	19	37,5	33	24	260 m		
		t	3	3	1,5	6	6	3					
	33 LVF 15 Optima	m/min	3 → 12 → 36 → 48 → 68 → 92				1,5 → 6 → 18 → 24 → 34 → 46				30	22	260 m
		t	3 3 3 2,25 1,5 0,75				6 6 6 4,5 3 1,5						
	50 LVF 15 Optima	m/min	5 → 20 → 62 → 80 → 114 → 150				2,5 → 10 → 31 → 40 → 57 → 75				50	37	398 m
		t	3 3 3 2,25 1,5 0,75				6 6 6 4,5 3 1,5						
	4 D3 V3	m/min	15 - 30 - 58						4	3			
	RCV 145	tr/min U/min rpm	0 → 0,8						2 x 6	2 x 4,4			
	ZC 40 A ZD 40 A RT 224	m/min	25						2 x 4	2 x 2,9			
	S 40 A RT 324 R ≥ 10 m	m/min	12,5 - 25						2 x 7	2 x 5,2			
	S 41 A RT 443 A1 2V R ≥ 10 m	m/min	15 - 30						4 x 5	4 x 3,7			

CEI 38 	IEC 38	kVA	
400 V (+6% -10%) 50 Hz		25 PC : 40 kVA 33 PC : 50 kVA 33 LVF : 50 kVA 50 LVF : 65 kVA	84/534 - 87/405






33 LVF 15
Optima



50 LVF 15
Optima



LSP 1

 Levage
 Distribution
 Orientation
 Translation
 Conforme aux directives CEE 84/534 et 87/405 sur le niveau acoustique

F Hoisting
D Trolleying
Slewing
Travelling
In compliance with the EEC 84/534 and 87/405 Instructions on noise level

GB Sollevamento
Distribuzione
Rotazione
Traslazione
Conforme alle direttive CEE 84/534 e 87/405 sul livello acustico

 Heben
 Katzfahren
 Schwenken
 Kranfahren
 Gemäss EWG-Richtlinien 84/534 und 87/405 für den Schall-Leistungspegel

D Elevación
Distribución
Orientación
Traslación
Conforme con las directivas CEE 84/534 y 87/405 sobre el nivel acustico

E 起升
变幅
回转
行走
符合 CEE 84/534 - CEE 87/405 声晌度规定

Ref. 2000.05 LSP 2



18.Rue de Charbonnières, B.P. 173
F-69132 ECULLY Cedex
Tél. (33)04.72.18.20.20
Fax (33)04.72.18.20.00
http://www.potain.com
E-mail : mkt@potain.fr

CITY CRANE MD 125 B
Copyright.Reproduction interdite © POTAIN 2000

Deutschland
POTAIN GmbH Tel: 06.105.704.0
Italia
POTAIN S.p.A. Tel: 0.331.49.33.11
Singapore
POTAIN PTE LTD Tel: (00.65) 227.1550

Modificazioni riservate
 Modificaciones reservadas
 Modifications réservées
 Änderungen vorbehalten
 Subject to modification
 Realisation HeadLines
 Printed in France