

Torre/Reazioni | Masts/Reactions | Mat/Réactions | Maste/Eckdrücke | Mástil/Reacciones | Tramo/Reacciones

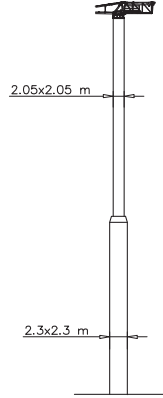
SN2050

 20 m  $\rightarrow$  78.3 m

		Torre/Masts/Mat/Maste/Mástil/Tramo																
	H[m]	4f/4f BFL117	4f/4f BF117	4f/4f BF052	4f/4f BF039	4f/2f SB117	4f/2f SB052	4f/2f SB039	2f/2f ST117	2f/2f ST052	2f/2f ST039	2f/2f STB117	2f/2f STB039	2f/2f RAO39	4f/2f SBB039	4f/2f SBB117	4f/4f BFB117	4f/4f BFB039
TRO	53.3	1	2	2				1			5							
	52	2	1		1				1									
TTD	52	3				1				1								
	52		6				1			3								
	54.6												5	1	1			7
	54.6												4	1	1		1	5

		Torre/Masts/Mat/Maste/Mástil/Tramo																
	H[m]	4f/4f BFL117	4f/4f BF117	4f/4f BF052	4f/4f BF039	4f/2f SB117	4f/2f SB052	4f/2f SB039	2f/2f ST117	2f/2f ST052	2f/2f ST039	2f/2f STB117	2f/2f STB039	2f/2f RAO39	4f/2f SBB039	4f/2f SBB117	4f/4f BFB117	4f/4f BFB039
BA052	58.5	1	2	2			1				5							
	57.2	2	1		1			1										
	57.2	3				1			1									
CAF	57.2		6				1			3								
	59.8											5	1	1				7
	59.8											4	1	1			1	5

		Torre/Masts/Mat/Maste/Mástil/Tramo																
	H[m]	4f/4f BFL117	4f/4f BF117	4f/4f BF052	4f/4f BF039	4f/2f SB117	4f/2f SB052	4f/2f SB039	2f/2f ST117	2f/2f ST052	2f/2f ST039	2f/2f STB117	2f/2f STB039	2f/2f RAO39	4f/2f SBB039	4f/2f SBB117	4f/4f BFB117	4f/4f BFB039
	50.7	3				1					1							
	47.9	2					1				2							
	49.4		5				1			4								
CATR																		
CATC																		
	52											3	1	1				7
	52											2	1	1			1	5

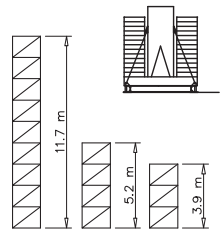


H=0-44 m	
R1	135 t
R2	140 t
R3	92 t
M	498 tm

H=45-62 m	
R1	174 t
R2	181 t
R3	119 t
M	637 tm

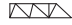
**Peso zavorra | Ballast weight | Poids du lest | Ballastgewicht | Peso de lastre**



H	Tot.
0-44 m	98000 kg
45-59 m	132740 kg

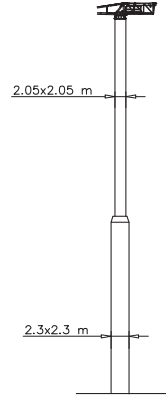



Torre/Reazioni | Masts/Reactions | Mat/Réactions | Maste/Eckdrücke | Mástil/Reacciones | Tramo/Reacções

SP2300

 20 m  $\rightarrow$  78.3 m

		Torre/Masts/Mat/Maste/Mástil/Tramo																
	H[m]	4f/4f BFL117	4f/4f BF117	4f/4f BF052	4f/4f BF039	4f/4f SB117	4f/4f SB052	4f/4f SB039	4f/4f ST117	4f/4f ST052	4f/4f ST039	4f/4f STB117	4f/4f STB039	4f/4f RAO39	4f/4f SBB039	4f/4f SBB117	4f/4f BFB117	4f/4f BFB039
TRO 	58.5								5									
	57.2									11								
TTD 	41.6									5	4							
	58.5												6	1			1	5
	58.5												6	1			8	





		Torre/Masts/Mat/Maste/Mástil/Tramo																
	H[m]	4f/4f BFL117	4f/4f BF117	4f/4f BF052	4f/4f BF039	4f/4f SB117	4f/4f SB052	4f/4f SB039	4f/4f ST117	4f/4f ST052	4f/4f ST039	4f/4f STB117	4f/4f STB039	4f/4f RAO39	4f/4f SBB039	4f/4f SBB117	4f/4f BFB117	4f/4f BFB039
CAF 	65								5									
	58.5									10								
	48.1								5	4								
	65												6	1			1	5
	65												6	1			8	

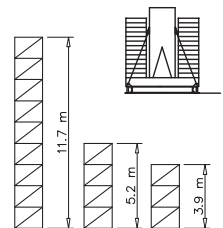
H=0-49 m
R1 141 t
R2 152 t
R3 128 t
M 775 tm

H=50-74 m
R1 181 t
R2 190 t
R3 160 t
M 973 tm

**Peso zavorra | Ballast weight | Poids du lest | Ballastgewicht | Peso de lastre**

H	Tot.
0-44 m	114000 Kg
45-64 m	146000 kg

		Torre/Masts/Mat/Maste/Mástil/Tramo																
	H[m]	4f/4f BFL117	4f/4f BF117	4f/4f BF052	4f/4f BF039	4f/4f SB117	4f/4f SB052	4f/4f SB039	4f/4f ST117	4f/4f ST052	4f/4f ST039	4f/4f STB117	4f/4f STB039	4f/4f RAO39	4f/4f SBB039	4f/4f SBB117	4f/4f BFB117	4f/4f BFB039
CATR 	57.2								4		1							
	55.9									8	2							
	40.3								5	2								
CATC 	57.2												4	1			1	5
	57.2												4	1			8	



Curve di carico | Courbes de charges | Load diagrams | LastKurven | Curvas de cargas

Pmax 8000 kg

	23400 kg	72.7 m	2.7	30	35	40	45	50	55	60	65	70	72.7
			16000	8000	6600	5600	4950	4300	3600	3000	2900	2600	2300
	21840 kg	67.1 m	2.7	30	35	40	45	50	55	60	65	67.1	
			16000	8000	6600	5800	5100	4500	3800	3300	3100	3000	
	20280 kg	61.5 m	2.7	30	35	40	45	50	55	60	61.5		
			16000	8000	6600	5800	5100	4500	3800	3500	3400		
	18720 kg	55.9 m	2.7	30	35	40	45	50	55	55.9			
			16000	8000	6600	5800	5100	4500	4100	4000			
	18720 kg	50.3 m	2.7	30	35	40	45	50.3					
			16000	8000	6600	5800	5100	4800					
	18720 kg	44.7 m	2.7	30	35	40	44.7						
			16000	8000	6600	5800	5500						

Pmax 16000/8000 kg

	23400 kg	72.7 m	2.7	14.5	15	20	25	30	35	40	45	50	55	60	65	70	72.7
			16000	16000	15600	11600	9700	7800	6600	5600	4950	4300	3600	3000	2900	2600	2300
	21840 kg	67.1 m	2.7	19.5	20	25	30	35	40	45	50	55	60	65	67.1		
			16000	16000	15900	9900	8000	6600	5800	5100	4500	3800	3300	3100	3000		
	20280 kg	61.5 m	2.7	20.3	25	30	35	40	45	50	55	60	61.5				
			16000	16000	15900	8000	6600	5800	5100	4500	3800	3500	3400				
	18720 kg	55.9 m	2.7	21.2	25	30	35	40	45	50	55	55.9					
			16000	16000	15900	8000	6600	5800	5100	4500	4100	4000					
	18720 kg	50.3 m	2.7	21.2	25	30	35	40	45	50.3							
			16000	16000	15900	8000	6600	5800	5100	4800							
	18720 kg	44.7 m	2.7	21.2	25	30	35	40	44.7								
			16000	16000	15900	8000	6600	5800	5500								

Pmax 12000/6000 kg

	23400 kg	72.7 m	2.7	19.5	20	25	30	35	40	45	50	55	60	65	70	72.7
			12000	12000	11600	9700	7800	6600	5600	4950	4300	3600	3000	2900	2600	2300
	21840 kg	67.1 m	2.7	20	25	30	35	40	45	50	55	60	65	67.1		
			12000	12000	11900	8000	6600	5800	5100	4500	3800	3300	3100	3000		
	20280 kg	61.5 m	2.7	21	25	30	35	40	45	50	55	60	61.5			
			12000	12000	11900	8000	6600	5800	5100	4500	3800	3500	3400			
	18720 kg	55.9 m	2.7	21.2	25	30	35	40	45	50	55	55.9				
			12000	12000	11900	8000	6600	5800	5100	4500	4100	4000				
	18720 kg	50.3 m	2.7	21.2	25	30	35	40	45	50.3						
			12000	12000	11900	8000	6600	5800	5100	4800						
	18720 kg	44.7 m	2.7	21.2	25	30	35	40	44.7							
			12000	12000	11900	8000	6600	5800	5500							

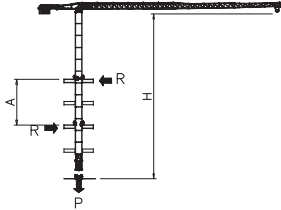
## Pesi e ingombri | Packing list | Liste de colisage | Gewicht und abmessungen

Denominazione Description	Disegno Draw	Pezzi Pieces	Dimensioni-Dimensions (mm)			Peso-Weight (kg)			
			L	W	H	Unit	Total		
Elemento di braccio Jib element Elément de èche Elemento de flecha (72 m jib version)	n°14		1	6230	1540	2320	3737	-	
	n°13		1	6000	1500	2320	2439	-	
	n°12		1	5960	1500	2250	2408	-	
	n°11		1	5960	1500	2230	1894	-	
	n°10		1	5860	1500	2216	1633	-	
	n°9		1	5875	1500	2196	1392	-	
	n°8		1	5840	1500	2176	1229	-	
	n°7		1	5830	1500	1730	1025	-	
	n°6		1	5820	1500	1700	913	-	
	n°5		1	5800	1500	1670	766	-	
	n°4		1	5775	1500	1600	610	-	
	n°3		1	5740	1500	1600	475	-	
	n°2 con punta braccio		1	6000	1500	1280	330	-	
Contorbraccio completo Complete counterjib Contreflèche complète Contraflecha completa	5000 Kg  5000 Kg (V100-130)	1	9500	2400	2010	10000	-		
Gruppo girevole Slewing group Table tournante Grupo giratorio	SN2050		1	3035	2230	2370	9000	-	
	SP2300		1	3035	2230	2370	9500	-	
Carrello Trolley Chariot Carretilla	P16		1	1970	1910	815	600	-	
Ballatoio con cabina Access balcony with cabin Porte cabine Balcón corrido con cabina		1	2500	2150	2450	1000	-		
Blocchi contrappeso Counterweight block Contre-poids Bloques de contrapeso	VX32		VS15	2	1000	200	3550	1560	3120
	VS15			VX32	6	1000	400	3550	3120

Pesi e ingombri | Packing list | Liste de colisage | Gewicht und abmessungen

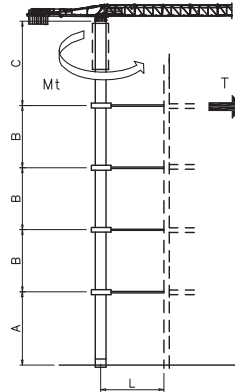
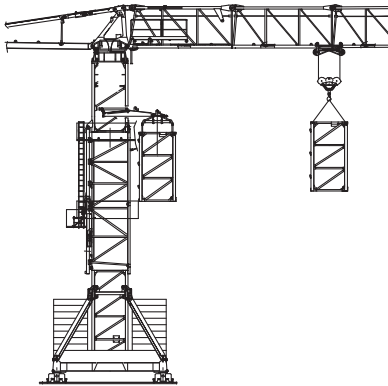
Denominazione Description	Disegno Draw	Pezzi Pieces	Dimensioni-Dimensions (mm)			Peso-Weight (kg)			
			L	W	H	Unit	Total		
Controbraccio counter jib Contrefleche Contraflecha			11500	2360	1600	6000			
Elemento di torre Mast element Elément de mature Elemento de torre	STD039		SP2300	—	3900	2360	2360	2603	—
			SN2050	—	3900	2110	2110	2320	—
	STD052		SP2300	—	5200	2360	2360	3198	—
			SN2050	—	5200	2110	2110	2850	—
	STD117		SP2300	—	11700	2360	2360	6475	—
			SN2050	—	11700	2110	2110	5790	—
	SB039		SP2300	—	3900	2360	2360	3031	—
			SN2050	—	3900	2110	2110	2710	—
	SB052		SP2300	—	5200	2360	2360	3470	—
			SN2050	—	5200	2110	2110	3350	—
	SB117		SP2300	—	11700	2360	2360	7830	—
			SN2050	—	11700	2110	2110	7000	—
	BF039		SP2300	—	3900	2360	2360	4210	—
			SN2050	—	3900	2110	2110	3770	—
BF052		SP2300	—	5200	2360	2360	4340	—	
		SN2050	—	5200	2110	2110	3880	—	
BF117		SP2300	—	11700	2360	2360	9150	—	
		SN2050	—	11700	2110	2110	8180	—	
Elemento di base Base element Mat de base Elemento de base		SP2300	1	6500	2360	2360	4550	—	
		SN2050	1	5200	2260	2260	4040	—	
Carro di base Base carriage Chassis de base Cruceta de base		8x8	1	11830	670	780	3340	3340	
		6x6	1	8870	670	780	2500	2500	
		8x8	2	5760	420	780	1600	3200	
		6x6	2	4320	420	780	1200	2400	
Puntoni di base Rafter Jambes de force Cabrios de base		8x8	4	6080	420	300	560	2240	
		6x6	4	4560	420	300	420	1680	
Elemento a perdere Disposable frame Chassis a perdre Bastidor desechable		SP2300	1	3000	2360	2360	2350	—	
		SN2050	1	2600	2260	2260	2030	—	
Elemento recuperabile Recoverable frame Chassis récupérable Bastidor recuperable		SP2300	1	1300	2900	2900	2100	—	
		SN2050	1	1300	2620	2620	1860	—	
Bogie di traslazione Driven bogie Boggie motorisèe Balancin de traslaciòn			4	1160	700	600	700	2800	
Blocco zavorra di base Base ballast block Lest de base Bloque de lastre		8x8	2	8300	1200	600	11900	23800	
		6x6	2	6400	1200	600	10600	21200	
		8x8	—	6400	1600	300	5700	—	
		6x6	—	4800	2000	300	5070	—	
Corsoio di montaggio Climbing cage Cage de montage Jaula de montaje		SP2300	1	8300	3250	3000	7500	—	
		SN2050	1	8300	2900	2700	6700	—	

**Gru in cavedio | Télescopage sur dalles | Climbing crane | Kletterkrane im Gebäude**



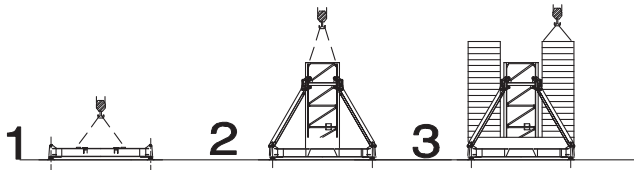
SN2050	H (m)	A (m)	R (t)	P (t)	
	9	45.3			
	10	42			
	11	39.3			
	12	37			
	13	35			
	14	33.4			
	Apertura passaggio gru Opening for crane passing				
		15	32		
		16	30.7		
		17	29.6		
18		28.6			
19		27.8			
20		27			

**Sopralzo idraulico | Telescopic | External climbing | Kletterkrane**

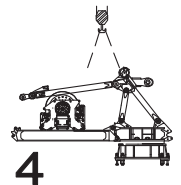


	SP2300	SN2050
C	31.2 m	31.2 m
B	19.5 m	19.5 m
A	56 m	50 m
T	23.4 m	27.5 m
MT	26 t xm	26 t xm

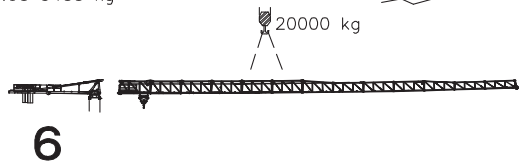
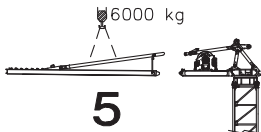
**Montaggio | Montage | Erection | Montage | Montaje | Montagem**



19000 kg con/with V100.100



- Gruppo rotazione 9000/9500 kg  
Slewing table
- Controbraccio e argano sollevamento V100.100 10000 kg  
Counterjib and hoisting winch
- Controbraccio e argano sollevamento V60.60 9400 kg  
Counterjib and hoisting winch



**Meccanismi | Mechanisms | Mécanismes | Antriebe | Mecanismos**

Sollevamento V60.60 Hoisting Levage Heben Elevación Elevação														 V60.60 33 kW 57 kVA   270 m
	m/min	2	20	31	46	60	72	1	10	15	23	30	36	
	t	8	8	7	4.5	3	1.4	16	16	14	9	6	2.8	
Sollevamento V100.100 Hoisting Levage Heben Elevación Elevação														 V100.100 75 kW 110 kVA   360 m 750 m (L)
	m/min	4	21	40	64	86	100	2	10	20	32	43	50	
	t	8	8	8	5.5	3.8	2	16	16	16	11	7.6	4	
Sollevamento V100.130 Hoisting Levage Heben Elevación Elevação														 V100.130 75 kW 110 kVA   360 m 750 m (L)
	m/min	6	28	54	86	115	130	3	14	27	43	57	65	
	t	6	6	6	4	2.8	1.4	12	12	12	8	5.6	2.8	
Carrello Trolleying Distribution Katzfahren Distribución Distribuição			0 → 80	m/min	5.5 kW	Potenza elettrica necessaria Puissance électrique nécessaire Necessary electric power Anschlusswert – Potencia								
Rotazione Slewing Orientation Schwenken Orientación Rotação			0 → 0,9				giri/min tr/min rp/min	8.8 kW @ 1200rpm n° 4 x 2.2 kW						
Traslazione Travelling Translation Kranfahren Traslación Traslaoção			0 → 20	m/min	9 kW									

**Rete elettrica | Réseau | Mains supply | Netzstrom | Red | Rede electrica**

**400 V - 50 Hz**