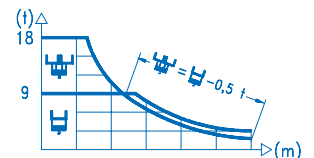
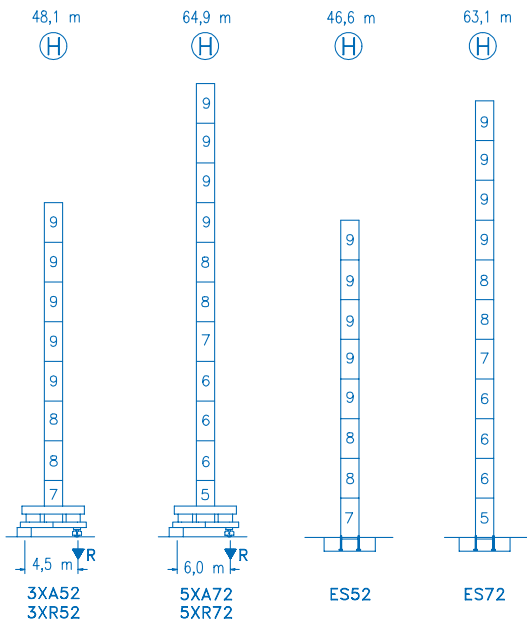


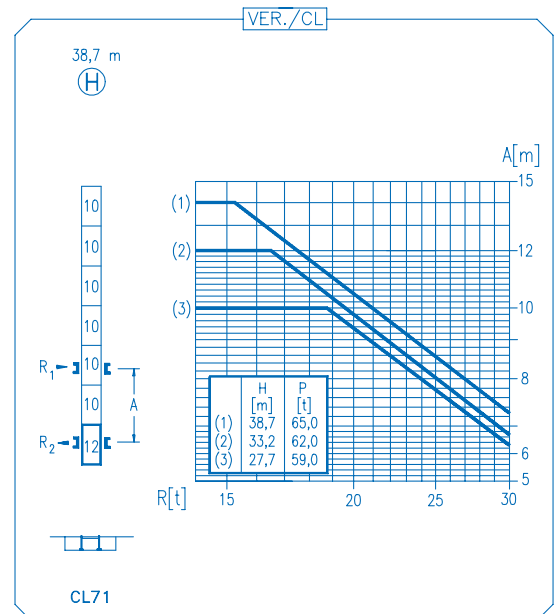
CE
DIN 15018 H1 B3

R	⚙️			⚙️									
60	10,1	15	18,0	18,0	25	30	34	40	44	50	54	60	m
	18000	11255	9000	9000	6210	5045	4365	3610	3225	2720	2510	2200	kg
54	10,5	15	18,8	19,1	25	30	34	40	44	50	54	m	
	18000	11835	9000	9000	6630	5390	4670	3865	3455	2965	2700	kg	
50	10,6	15	18,9	19,2	25	30	34	40	44	50	m		
	18000	11870	9000	9000	6700	5450	4720	3910	3495	3000	kg		
44	10,9	15	19,5	20,2	25	30	34	40	44	m			
	18000	12355	9000	9000	7070	5755	4990	4135	3700	kg			
40	11,2	15	20,0	20,8	25	30	34	40	m				
	18000	12720	9000	9000	7335	5975	5180	4300	kg				
34	11,1	15	19,9	20,9	25	30	34	m					
	18000	12600	9000	9000	7360	5995	5200	kg					
30	11,0	15	19,7	20,9	25	30	m						
	18000	12500	9000	9000	7365	6000	kg						





N	Ref.	Ø (m)	h (m)
5	TS25	2,0	5,5
6	S24	2,0	5,5
7	TS24	2,0	5,5
8	S23	2,0	5,5
9	S22	2,0	5,5
10	S15	1,6	5,5
12	CLS15	1,6	3,1



R. máx.	En servicio In operation En service In Betrieb	3XR52 77,2 t
		5XR72 87,5 t

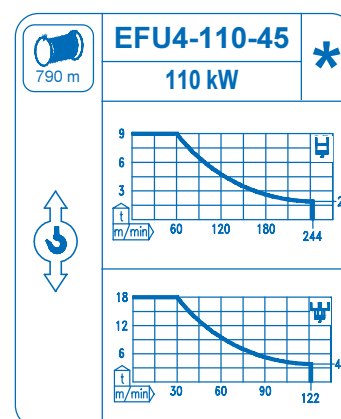
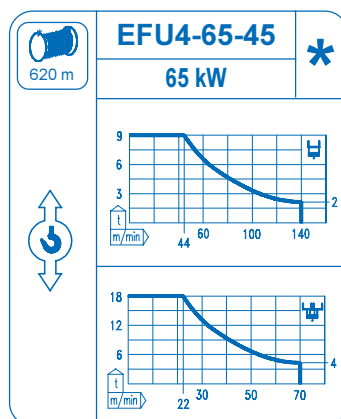
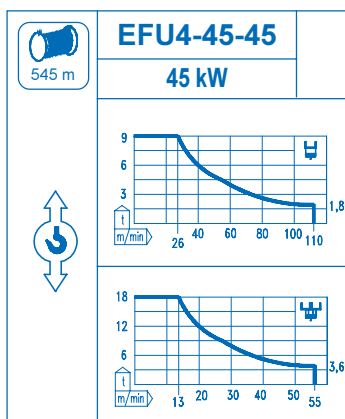
R. máx.	Fuera de servicio Out of service Hors service Ausser Betrieb	3XR52 90,9 t
		5XR72 130,0 t

CFU-7.5
7,5 kW
0 ↻ 94 m/min

GR-12
2 x 120 Nm
0 ↻ 0,7 rpm

TRA-7.5
2 x 75 Nm
0 ↻ 20 m/min

TRA-7.5VC
2 x 75 Nm
0 ↻ 20 m/min
5XR72



Tensión de alimentación Operating voltage Tension de service Betriebsspannung	400 V 3 ph 50 Hz
--	---------------------------------

Opcional Optional En option Kaufoption	*
---	----------